



## Yubetsu Town Area Map



### Access (by car)

Sapporo	.....	Around 3 hrs. 30 min. (270km)	Kamiyubetsu Tulip Park
Asahikawa	.....	Around 2 hrs. (140km)	
Okhotsk Monbetsu Airport	.....	Around 30 min. (25km)	
Memambetsu Airport	.....	Around 1 hr. 30 min. (90km)	
Engaru Interchange	.....	Around 30 min. (20km)	
Higashimokoto Shibazakura Park	.....	Around 2 hrs. (114km)	
Shibazakura Moss Phlox Takinoue Park	.....	Around 1 hr. 20 min. (74km)	

### GPS Search

01586-2-3000 (cannot be phoned for inquiries) **MAPCODE**® 404 549 747\*20

### Information

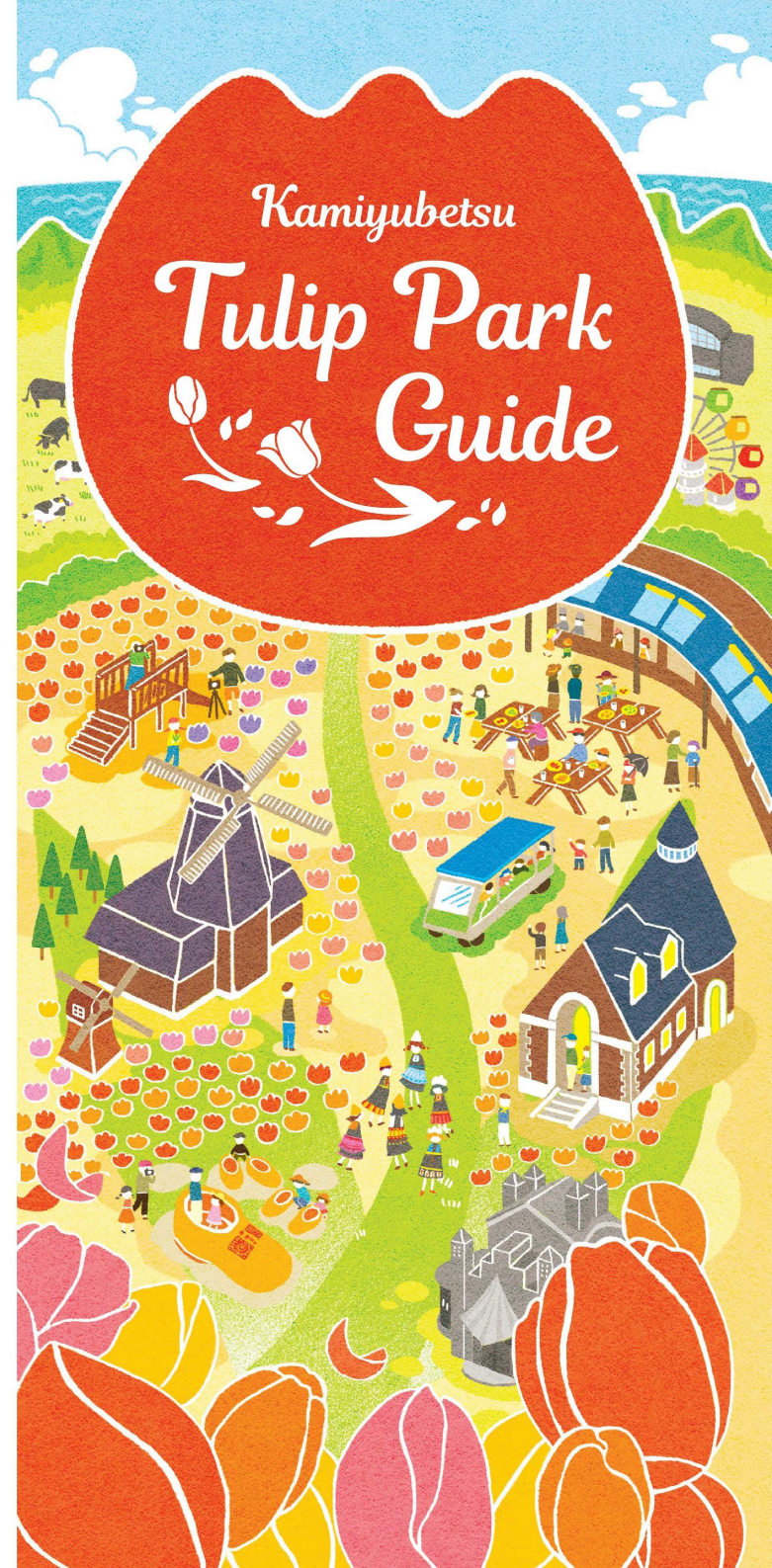
<b>Open Hours</b>	8:00am-6:00pm. No entry after 5:30pm.	
<b>Admission</b>	Adult (ages 16 and over): ¥600	Adult group rate (10 or more people): ¥500
	Child (ages 6-15): ¥300	Child group rate (10 or more people): ¥250
	Seasonal Pass (unlimited visits throughout the season)	Adult: ¥1,000 Child: ¥500

### Inquiries

■ Kamiyubetsu Tulip Park General Information Center (Yubetsu Town Tourism Association)  
**Phone: 01586-8-7356**  
**Website** <https://www.town.yubetsu.lg.jp/tulippark/>

■ Industry, Commerce and Tourism Section, Yubetsu Town Hall  
**Phone: 01586-2-5866**

# Kamiyubetsu Tulip Park Guide



*A storybook world with vast fields of tulips, set against the stunning blue waters of the Sea of Okhotsk*

Kamiyubetsu Tulip Park is a floral paradise, with around 200 species of tulips blooming across an enormous 7-hectare area. When the spring flower season has ended in most of Japan, Kamiyubetsu is coming alive in colors that will captivate you.

## Tulip Fair

Tulips LIVE!

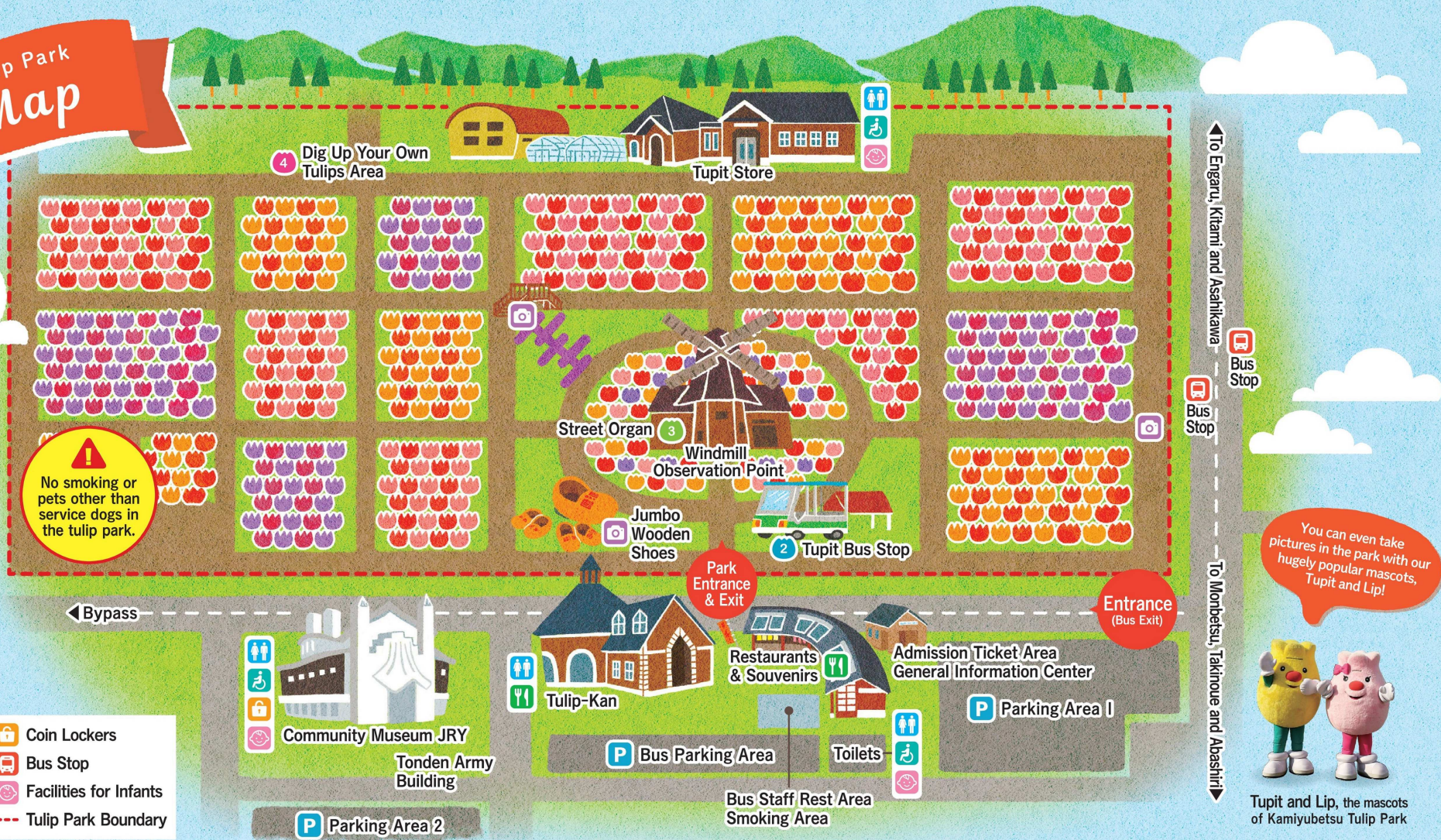
**May 1 to early June**

Videos of the flowers will be streamed live throughout the Tulip Fair!



# Kamiyubetsu Tulip Park Guide Map

Best time to see the tulips  
Mid to late May



- Restaurant
- Photo Spot
- Toilets
- Accessible Toilets
- Coin Lockers
- Bus Stop
- Facilities for Infants
- Tulip Park Boundary

## 1 Take in spectacular views of the whole park from the viewpoints



Viewpoints such as the Windmill Observation Point and the viewpoint by the national highway offer incredible views of the whole park. When the tulips are in full bloom, the panoramic views will take your breath away.

## 2 Ride around the park on the Tupit Bus



This electric bus will take you all around Kamiyubetsu Tulip Park. The trip takes 12 minutes in total and includes interesting information about the park from a guide.

**Fare**  
Adult (ages 16 and over): ¥300  
Child (ages 6-15): ¥100

## 3 Dress up in traditional Dutch clothing



Walk around the park in traditional Dutch clothing ...and don't forget to take a photo!

**Costume rental**  
¥500 per outfit (adult or child)

## 4 Dig up your own tulips

The tulips in one field are for available for sale, and you can enjoy the experience of digging them yourself! **¥100 per tulip**

## 5 Buy snacks and souvenirs

Enjoy local cuisine at the park's restaurant or buy goods featuring Yubetsu's famous tulips at the store.